

Grasso RC 2111 package

Specifications

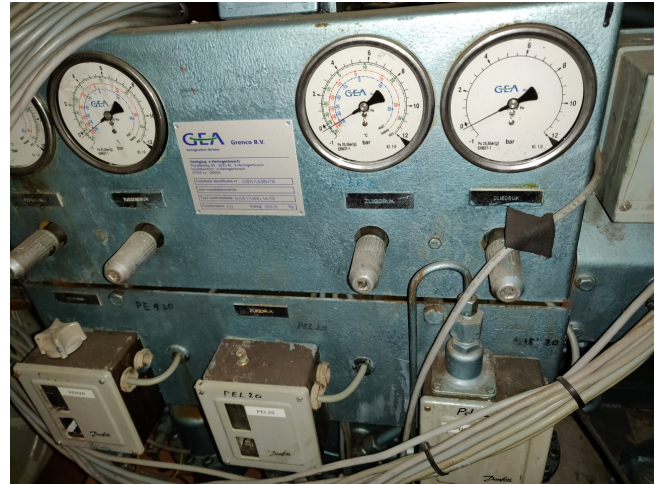
Marka	Grasso
Typ	RC 2111 package
Czynnik chłodzący	NH 3 / Freon
kW at -20°C/+40°C	95,1
kW at -30°C/+40°C	79,2
kW at -40°C/+40°C	53,1
Silnik elektryczny Specs	55 kW at 1465 RPM
Ciśnieniowe przełączniki bezpieczeństwa	✓
Wskaźniki ciśnienia	✓
Obiornik cieczy	✓
Obiornik cieczy ltr.	51
m3 / h	266
Uwagi	Capacity based on -25°C/+40°C
Package / Rack	✓
Stock	1



Description

Used Grasso RC 2111 package

Used Gea - Grasso RC 2111 two-stage V-belt driven compressor with 55 kW electromotor at 1465 RPM. For all the other specs (if available), see the picture of the manufacturer model plate or the attached pdf file. *Why choose for HOSBV? Were not only the largest used refrigeration specialist in Europe, but also, we deliver all equipment including an extensive test, warranty and industrial cleaning. *Optional we can also perform a new paint job and arrange the logistics.





Performance table and freezing

cylinder arrangement	single-stage						two-stage	
	type		NH ₃	R12	R22	R502	type	NH ₃)
	RC 211	Q ₀ P _e	163 34	93 25	157 37	160 47		
	RC 311	Q ₀ P _e	245 50	140 36	236 55	241 70	RC 2111	Q ₀ P _e
	RC 411	Q ₀ P _e	326 65	186 48	314 73	321 93	RC 3111	Q ₀ P _e
	RC 511	Q ₀ P _e	490 97	279 70	471 108	481 138	RC 4211 RC 5111	Q ₀ P _e Q ₀ P _e
	RC 611	Q ₀ P _e	734 144	418 104	707 185	722	RC 6311	Q ₀ P _e

Technical data of Grasso two-stage compressors

Delivery programme

Series	Type	Cylinders				Rotational speed		LP swept volume at max. speed (m ³ /h)	Standard part load steps expressed in percentage of full load LP swept volume (%)				
		Bore (mm)	Stroke (mm)	Number	Volume ratio φ	min.	max.						
RC9	RC219	110	85	2	1	2	600	141	100				
	RC429			4	2					2	281	100-75-50	
RC11	RC2111	160	110	2	1	2	400	1000	265	100			
	RC3111			3	1						3	398	100-67
	RC4211			4	2						2	531	100-75-50
	RC5111			5	1						5	664	100-80-60-40
	RC6311			6	3						2	796	100-67-33
	RC7211			7	3						3.5	929	100-86-72-57-43-29
	RC8411			8	4						2	1062	100-75-50-25
	RC9311			9	3						3	1194	100-78-67-56-45-33
RC10211	10	3	3	1327	100-80-70-60-50-30								

